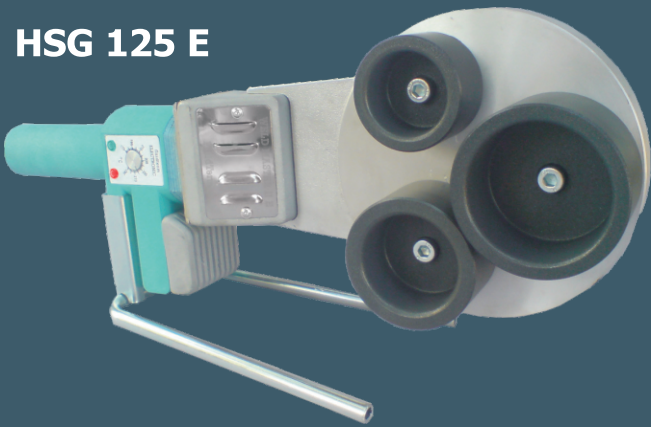
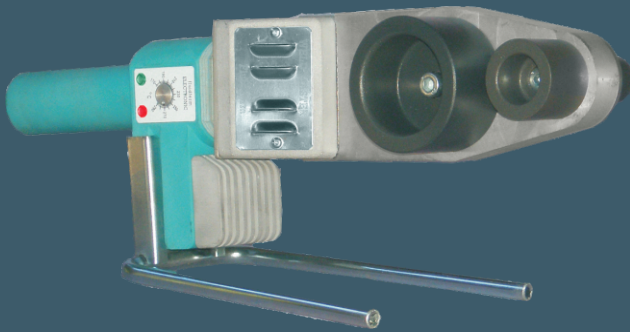


HSG 125 E



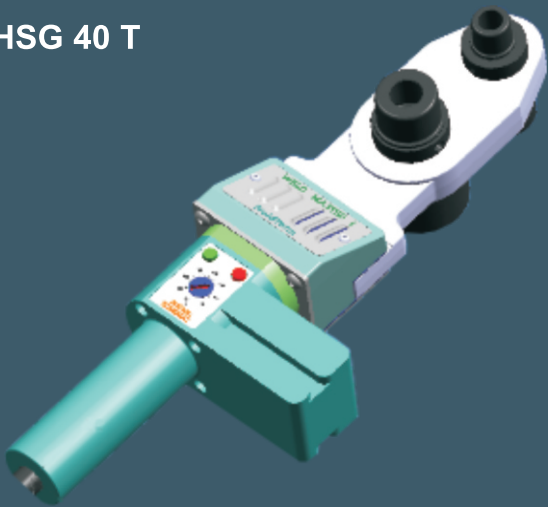
MODEL	PIPE DIAMETER mm	POWER	VOLTAGE	WEIGHT
HSG 125 E	16-125	1500W	230 V	2.3kg

HSG 63 E



MODEL	PIPE DIAMETER mm	POWER	VOLTAGE	WEIGHT
HSG 63 E	16-63	800W	230 V	1.6kg

HSG 40 T



MODEL	PIPE DIAMETER mm	POWER	VOLTAGE	WEIGHT
HSG 40 T	16-40	600W	230 V	1.3kg

PROPERTIES FOR MODELS
HSG 125 E AND HSG 63 E

- A light device, easy for handling and manipulating. It is possible to use it directly on a pipeline, or on a worktable. It comes equipped with a supporting stand and a holder for plasing the device in vertical, or in horizontal position.
- Simple and easy changing and attaching of PTFE coated heating attachments.
- Heating plate is in accordance with regulations of the DVS - Deutscher Verband für Schweissen (German Welder's Association).
- Electrical tubular heater, which is infused into anti-corrosive aluminum alloy, as an indirect heat transmitter; optimated heat expansion and constant temperature of the entire useful heating plate.
- Adjustable working temperature in range of 170-290°C, with electronic temperature regulater , which have very slight deviation (+/-1°C), and with temperature measuring probe PT 100. Regulation of set temperature values is automated within limiting values which are stipulated by the DVS.
- Light control and indication of the temperature, and electrical voltage.

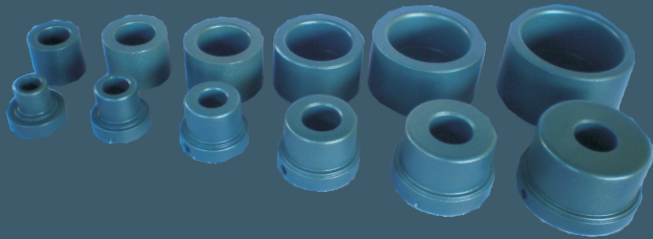
PROPERTIES FOR HSG 40 T MODEL

- A light device, simple for handling, with the possibility of direct use on a pipeline, or on a worktable. It comes equipped with a supporting stand.
- Simple and easy changing and attaching of the PTFE coated heating attachments.
- The heating plate is in accordance with the regulations of the DVS.
- Electrical tubular heater, which is infused into anti corrosive aluminum alloy, as an indirect heat transmitter, calibrated heat propagation and constant temperature of the entire useful heating plate.
- Working temperature set at 260°C without the possibility of changing the working temperature (optimized for PP-R), with capillary thermostat for temperature regulation, sensitivity (+/- 2%). The regulation of the temperature settings is automatic.
- Light control of the temperature and electrical voltage.

Necessary additions for the appliances, used for socket welding of plastic pipes and joining elements are heating attachments. They are made of special aluminum alloy, lined with high quality “non stick” layer, which is made of heat resistant Teflon (PTFE).

They are designed according to the standards and regulations of the DVS (DVS 2208), and they are available in variants “A” and “B”, which are intended for different diameters and depths of welding.

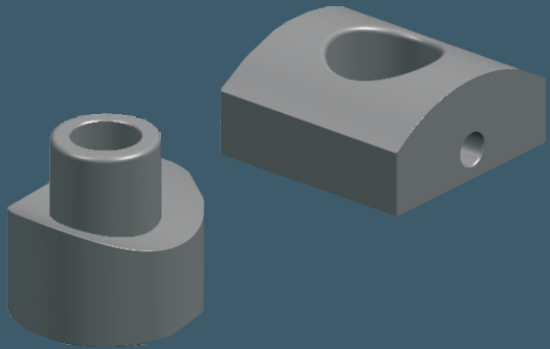
- “A” variant is designed for plastic tubes which do not require additional processing before welding takes place (calibration, removing additional reinforcing layer).
- “B” variant is designed for plastic tubes which require calibration, which is removal of the additional reinforcing layer, prior to welding.



Special kind of additional tools are heating saddle welding sockets.

They are designed and manufactured in accordance with the “AQUATHERM” system.

They are available for pipe diameters, in range from 40-125mm, and with the size of the attachment from Ø 20 to Ø 40mm, and for 1/2” and 3/4” female thread.



Hand socket welding devices are in accordance with the current standards and regulations (DVS and DIN) for polyfusion joining of pipes and fittings, from PE, PP, PP-R, PB and PVDF. The most important parts of a device are: aluminum heating plate with integrated tubular heater, and thermo insulated casing with a handgrip made of high quality polyamide, reinforced with fiberglass PA66-GF30. Depending on the model and the type of an appliance, the casing contains adjustable electronic thermal regulation system, or pre-set thermostatic temperature control.

With desire to provide a very high degree of comfort in exploitation of our appliances, and in order to provide protection during storage and transportation periods, we offer to the users of the FLUIDTERM devices customizable kits in quality and aesthetic metallic cases. The kits can be customized on the occasion of purchase.



HSG 63 E BASIC SET

HSG 63 E device, supporting stand, worktable fastening holder, heating attachments, diameters Ø 20, Ø 25, Ø 32mm, in a metallic case.

HSG 63 E PROFESSIONAL SET

HSG 63 E device, supporting stand, worktable fastening holder, heating attachments, diameters Ø 20, Ø 25, Ø 32, Ø 40, Ø 50, Ø 63mm, in a metallic case.

HSG 125 E PROFESSIONAL SET

HSG 125 E device, supporting stand, worktable fastening holder, heating attachments, diameters Ø 50, Ø 63, Ø 75, Ø 90, Ø 110mm, in a metallic case.

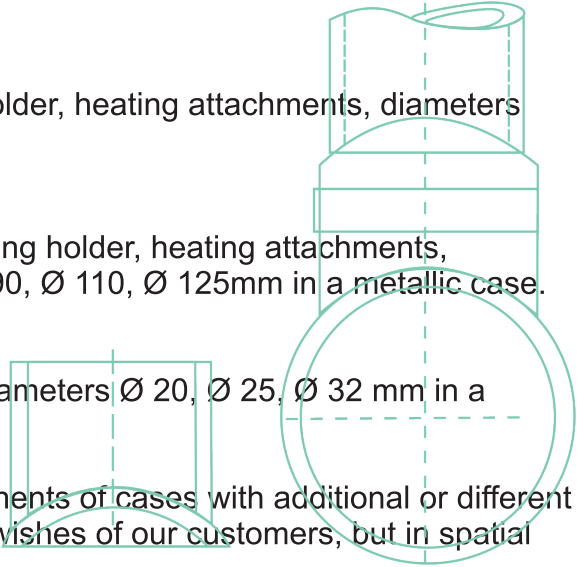
HSG 125 E PREMIUM SET

HSG 125 E device, supporting stand, worktable desk fastening holder, heating attachments, diameters Ø 20, Ø 25, Ø 32, Ø 40, Ø 50, Ø 63, Ø 75, Ø 90, Ø 110, Ø 125mm in a metallic case.

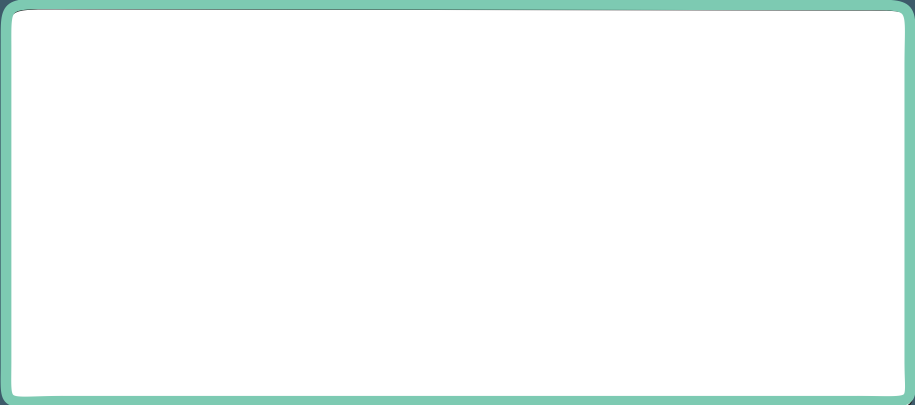
HSG 40 T BASIC SET

HSG 40 T device, supporting stand, heating attachments, diameters Ø 20, Ø 25, Ø 32 mm in a metallic case.

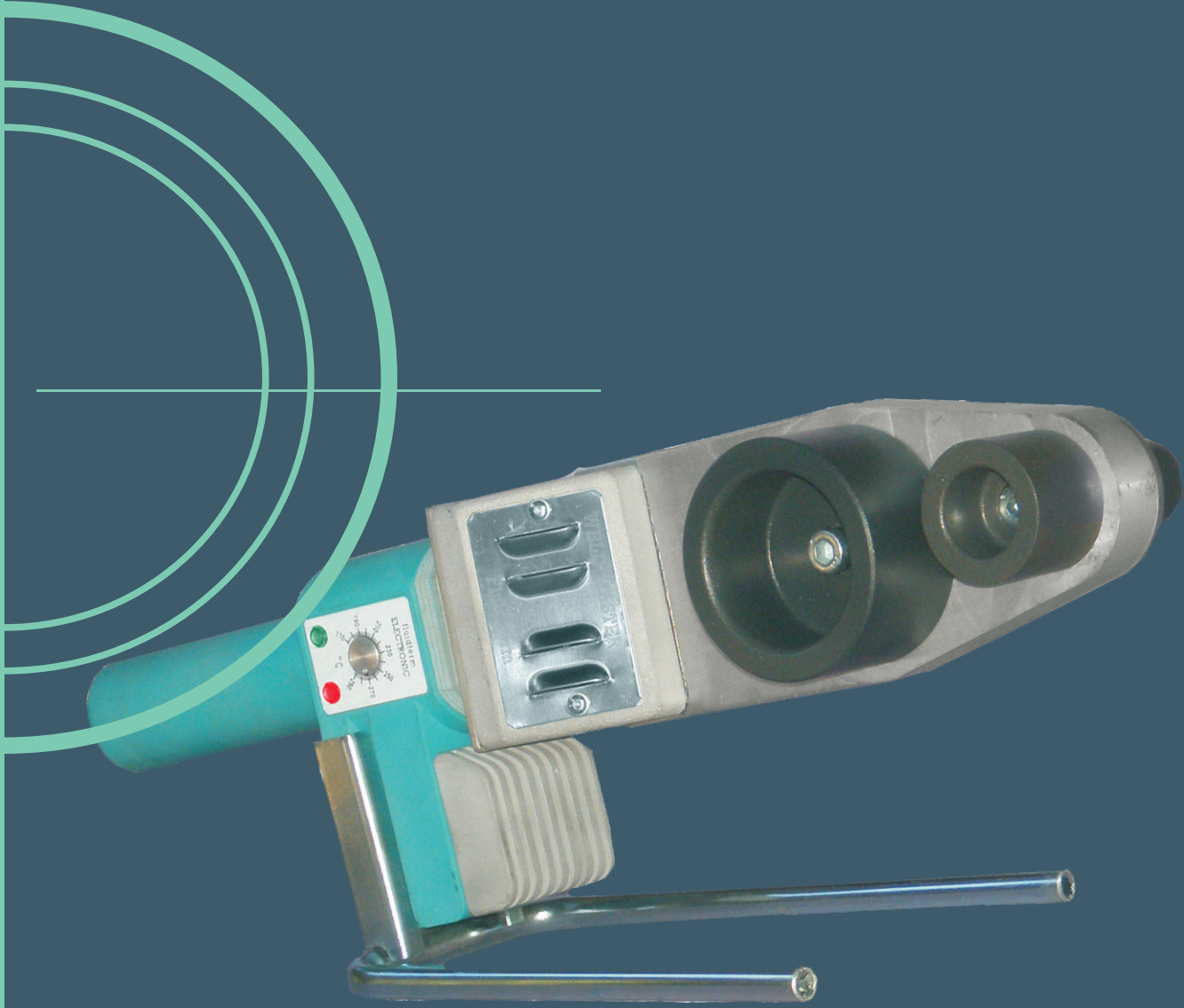
It is possible of course, to configure and supplement components of cases with additional or different tools, which are at our disposal, all according to needs and wishes of our customers, but in spatial abilities of cases themselves.



DISTRIBUTOR



**DEVICES FOR POLYFUSIONAL SOCKET
WELDING OF PLASTIC PIPELINES**



JNA 54/1 SRB 11306
Zaklopača, Beograd

www.fluidterm.com

Tel.:+381 11 8525107
Fax:+381 11 8525412
Email:info@fluidterm.com